

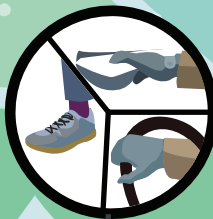
Safe Winter Walking

go.stolaf.edu/winterwalking

Do not grab objects as you are exiting. Exit the vehicle then retrieve items.



Maintain three points of contact when stepping out of vehicles. (trucks, SUV's etc...)



Use vehicle for support.



Use caution when shifting your weight to exit a vehicle.

At St. Olaf College

Our goal is zero slips and falls

Walking during the winter requires special attention to avoid slipping and falling. The National Safety Council estimates that falls cause more than 1,500 deaths and 300,000 injuries per year.

Report icy/slippery conditions using the All About Olaf app



or visit

go.stolaf.edu/winterwalking

This poster is provided to you by the

 ST. OLAF SAFETY COMMITTEE

special thanks to Iowa State University EH&S for poster design